



**ABBIATI**  
CASINO EQUIPMENT

ITALIAN QUALITY & DESIGN

**EUROPEAN JETONS & PLAQUES**

The Abbiati Company is privately owned by the Abbiati family and is based in Turin, Italy. Abbiati Casino Equipment has been in business in excess of 30 years and has had its professional articles for Casinos since 1976.

Abbiati has built up an international reputation and client base with almost every county and city that offers legalized gaming.

The company is on two sites within 50 metres from each other; one housing Office, Show Room and Production facilities and the other is used for assemblage and storage; with the option of expansion on both sites.

Abbiati Casino Equipment's main business is manufacturing and supplying Casino based equipment as used in live gaming: Roulette Wheels, Tables, Value Chips, Plaques and Jetons and all styles of gaming layouts (table felts) together with technical back up of full CAD design and technical services.

Our manufacturing facility is split into three main sections, all located under the same roof:

- Chips and Plaques are manufactured with the latest injection moulding machines, incorporating the latest RFID Technology using 13.56 MHz with PJM.
- Table and Roulette Wheel manufacture and assembly incorporate our CNC machining processes to ensure quality and precision, along with Layout (table felts) design and printing department for both wool and synthetic products.
- Electronic departments for the assemblage of Winning Number Displays, Laser Wheels and Independent electronic levelling systems for Roulette wheels.

All our manufacturing processes are supported by our Graphic and CAD Design department, to ensure Italian Quality and Design.

Quality, Service and Security are prime objectives for the Abbiati Company, which has secure rooms and high surveillance for the final assembly of the value chips incorporating RFID.

Our consistent growth and success stands as a witness of our continued commitment to deliver high quality, flawless products and services.

President  
Giovanni Abbiati



**RFID** (radio frequency identification)

Abbiati have, like their value chip, incorporated **RFID** 13.56 MHz PJM tag into the Plaque that allows the operator to have total security of the Plaque as every tag has its own signature/DNA to distinguish it from another ie Cash, NN (various series) and Junket.

This, together with the ability of identifying and verifying each movement of the Plaque in real time, gives the operator peace of mind when issuing the high value Plaque on to the Casino floor.

Abbiati will continue to manufacture and design products using the most sophisticated materials and equipment the market has to offer.

# RFID is a must have solution



## RFID PLAQUES

- Radio Frequency Identification -

ITALIAN QUALITY & DESIGN

# EUROPEAN STYLE JETONS

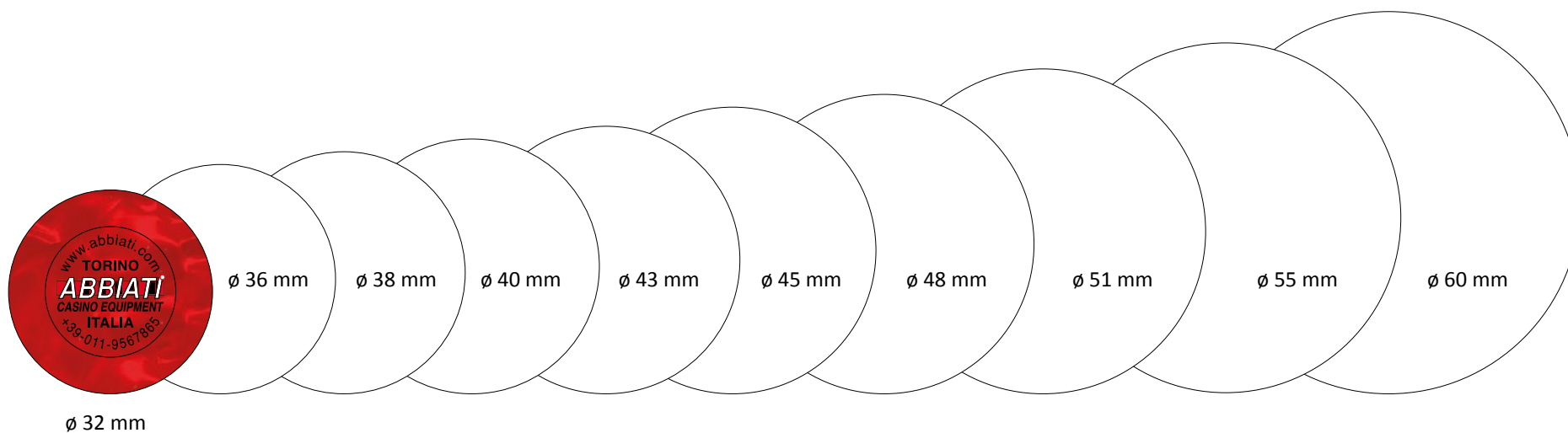


**EUROPEAN STYLE JETONS & PLAQUES**

ITALIAN QUALITY & DESIGN

## EUROPEAN STYLE JETONS

- 6.01.001 Jetons Ø 32 mm - mother of pearl
- 6.03.001 Jetons Ø 36 mm - mother of pearl
- 6.04.001 Jetons Ø 38 mm - mother of pearl
- 6.05.001 Jetons Ø 40 mm - mother of pearl
- 6.06.001 Jetons Ø 43 mm - mother of pearl
- 6.07.001 Jetons Ø 45 mm - mother of pearl
- 6.08.001 Jetons Ø 48 mm - mother of pearl
- 6.09.001 Jetons Ø 51 mm - mother of pearl
- 6.10.001 Jetons Ø 55 mm - mother of pearl
- 6.11.001 Jetons Ø 60 mm - mother of pearl



# EUROPEAN STYLE PLAQUES

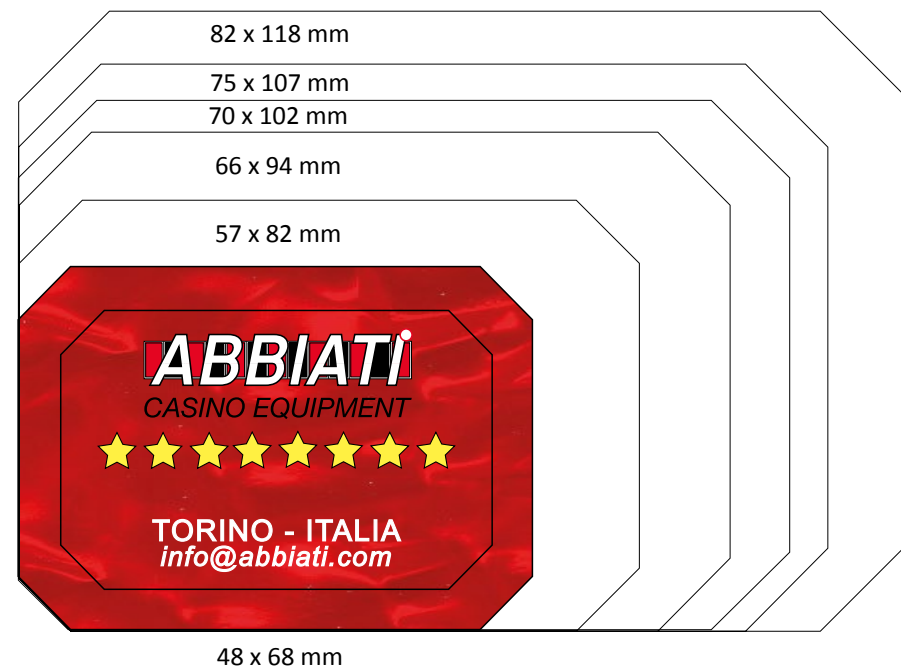


## RECTANGULAR - ROUND CORNER PLAQUES



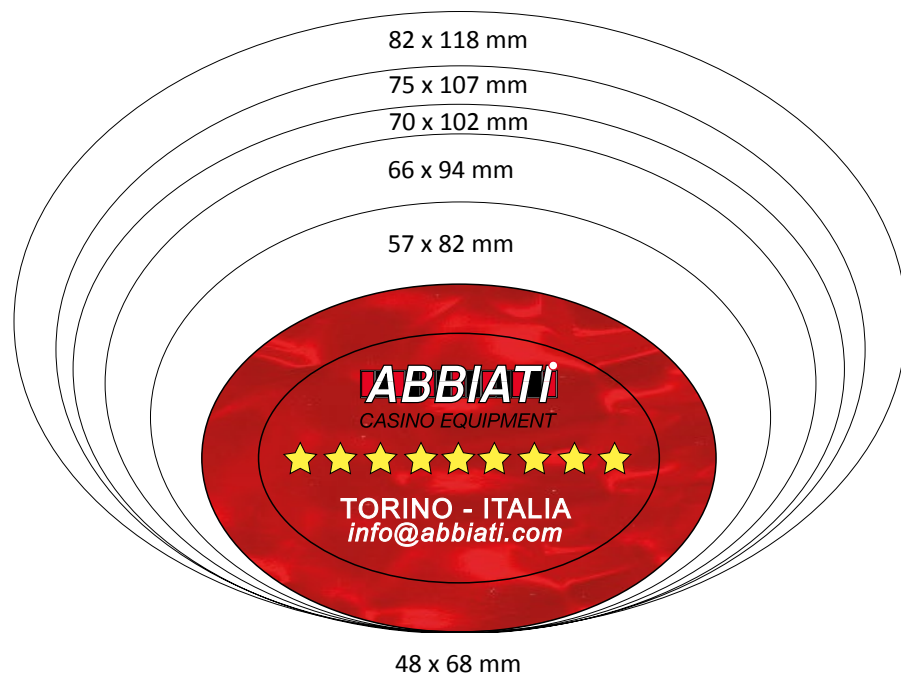
- 6.51.001 Plaques 48 x 68 mm - rectangular - round corner
- 6.52.001 Plaques 57 x 82 mm - rectangular - round corner
- 6.53.001 Plaques 66 x 94 mm - rectangular - round corner
- 6.63.001 Plaques 70 x 102 mm - rectangular - round corner
- 6.54.001 Plaques 75 x 107 mm - rectangular - round corner
- 6.55.001 Plaques 82 x 118 mm - rectangular - round corner

## RECTANGULAR - CUT CORNER PLAQUES



- 6.51.002 Plaques 48 x 68 mm - rectangular - cut corner
- 6.52.002 Plaques 57 x 82 mm - rectangular - cut corner
- 6.53.002 Plaques 66 x 94 mm - rectangular - cut corner
- 6.63.002 Plaques 70 x 102 mm - rectangular - cut corner
- 6.54.002 Plaques 75 x 107 mm - rectangular - cut corner
- 6.55.002 Plaques 82 x 118 mm - rectangular - cut corner

## OVAL PLAQUES



- 6.51.003 Plaques 48 x 68 mm - oval
- 6.52.003 Plaques 57 x 82 mm - oval
- 6.53.003 Plaques 66 x 94 mm - oval
- 6.63.003 Plaques 70 x 102 mm - oval
- 6.54.003 Plaques 75 x 107 mm - oval
- 6.55.003 Plaques 82 x 118 mm - oval

## SQUARE - ROUND CORNER PLAQUES



- 6.41.001 Plaques 60 x 60 mm - square - round corner



# SECURITY SYSTEM

**SECURITY**

ITALIAN QUALITY & DESIGN

## ABBIATI Security Plaques

Diamond or Crystal - Gold with Hologram - Filigree



**NEW SECURITY FEATURES**

ITALIAN QUALITY & DESIGN

## ABBIATI Security Detection

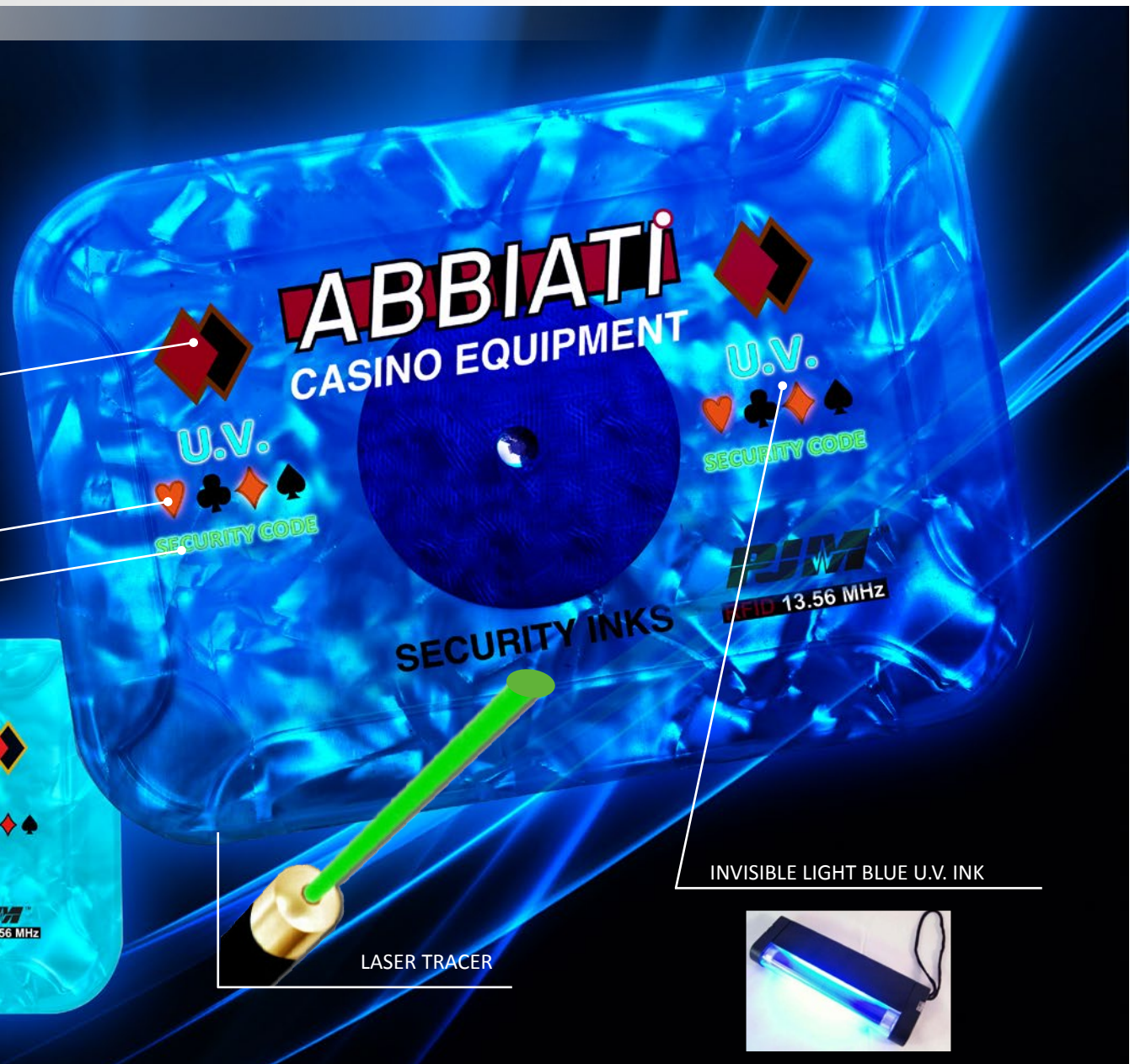
UV security INK - Magnetic INK - Laser Tracer



RED & BLACK MAGNETIC INK

RED U.V. INK ACTIVATED IN ORANGE FLUO

INVISIBLE YELLOW U.V. INK



LASER TRACER

INVISIBLE LIGHT BLUE U.V. INK



## SECURITY FEATURES



TRANSPARENT LUNETTE



TULLE - LACE FILAMENT -



SERIAL NUMBER - EACH SIDE -



BI-COLOUR STRIPE - HORIZONTAL OR VERTICAL -



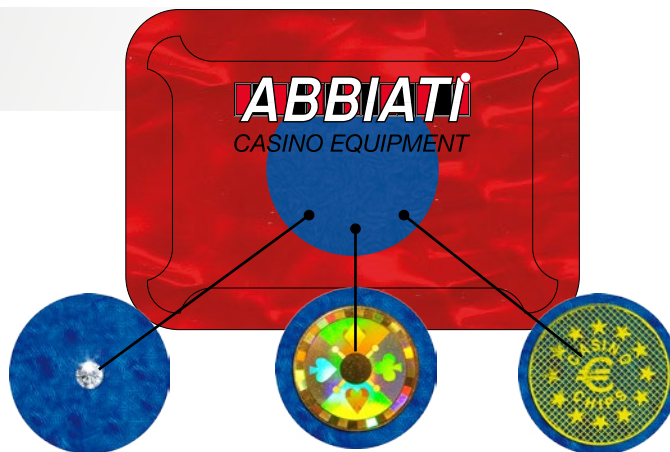
TRI-COLOUR STRIPE - HORIZONTAL OR VERTICAL -



## SECURITY FEATURES



TRANSPARENT LUNETTE



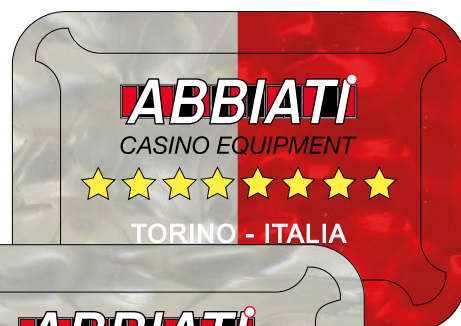
DIAMOND or CRYSTAL

GOLD WITH HOLOGRAM

FILIGREE



SERIAL NUMBER - EACH SIDE -



BI-COLOUR STRIPE - HORIZONTAL OR VERTICAL -



TULLE - LACE FILAMENT -



TRI-COLOUR STRIPE - HORIZONTAL OR VERTICAL -



INVISIBLE LIGHT BLUE U.V. INK  
RED U.V. INK ACTIVATED IN ORANGE  
INVISIBLE YELLOW U.V. INK

LASER TRACER



BLACK - RED MAGNETIC INK

O.V.I.  
(Optical Variable Ink)

## SECURITY

ITALIAN QUALITY & DESIGN

**STANDARD MOTHER OF PEARL (M/P)**  
**COLOUR KIT FOR EUROPEAN JETONS & PLAQUES**



5 M/P



10 M/P



15 M/P



115 M/P



16 M/P



20 M/P



120 M/P



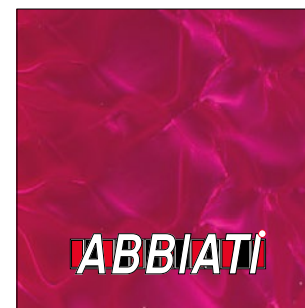
24 M/P



125 M/P - FLUO



28 M/P - FLUO



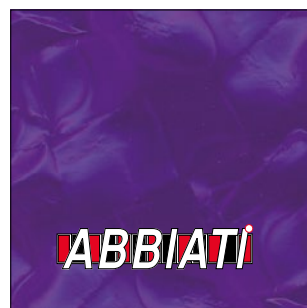
32 M/P



34 M/P



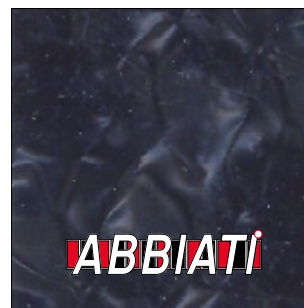
36 M/P



38 M/P



43 M/P



147 M/P



BLACK - SOLID



WHITE - SOLID

**INVERTED MOTHER OF PEARL (M/P - i )**  
**COLOUR KIT FOR EUROPEAN JETONS & PLAQUES**



5 M/P - i



15 M/P - i



16 M/P - i



115 M/P - i



20 M/P - i



120 M/P - i



24 M/P - i



125 M/P - i - FLUO



28 M/P - i - FLUO



32 M/P - i



34 M/P - i



36 M/P - i



38 M/P - i



43 M/P - i



50 M/P - i

## MOTHER OF PEARL



PREFERRED FOR LUNETTE



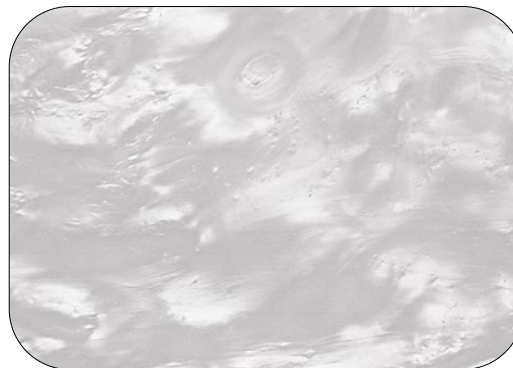
STANDARD DESIGN M/P



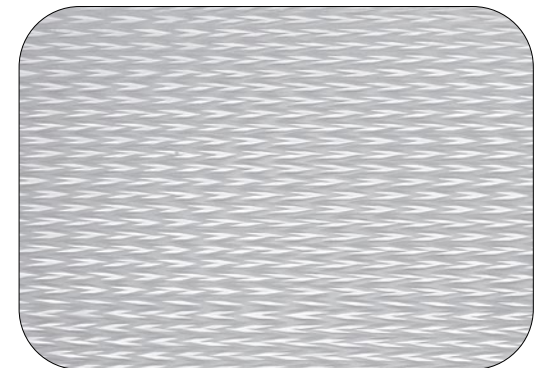
STANDARD COLOURED DESIGN M/P - 3



CUBE DESIGN M/P - 7



BIRDSEYE M/P - 8



FISHBONE M/P - 9

## EUROPEAN STYLE JETONS & PLAQUES

Customised Example



## EUROPEAN STYLE JETONS

ITALIAN QUALITY & DESIGN



[www.abbiati.com](http://www.abbiati.com)



**ABBIATI CASINO EQUIPMENT s.n.c.**

9, Strada della Risera - 10090 ROSTA (TORINO - ITALY) - Tel + 39 011 9567865 - Fax +39 011 9567871 - V.A.T.IT 06075960010 - [info@abbiati.com](mailto:info@abbiati.com)